

OPENNTF WEBINAR

September 18, 2025

Domino for Newbies: Development II

Jesse Gallagher, Graham Acres



AGENDA

- Welcome
- Presentation
 - Jesse Gallagher, Graham Acres
- Q and A



OPENNTF SPONSORS

- Prominic donates all IT related services
 - Cloud Hosting for OpenNTF
 - Infrastructure management for HCL Domino Servers



COMMUNITY – WE ARE ALL OPENNTF

- Participate – we all learn from each other
- We are all volunteers
- No effort is too small
- If your idea is bigger than you can do on your own, we can connect you to a team to work on it
- Test or help or modify an existing project
- Write guides or documentation
- Add reviews on projects / stars on Snippets



2025-2026
Elections
Reminder

UPCOMING EVENTS

- October
 - OpenNTF Webinar: Creating a Service Oriented Architecture Platform with Domino – Richard Moy
 - October 16
 - Let's Connect - Nordics User Group
 - October 21, Copenhagen
 - October 23, Stockholm
 - <https://letsconnect.world>
 - Open Mic with the HCL Developers
 - TBD

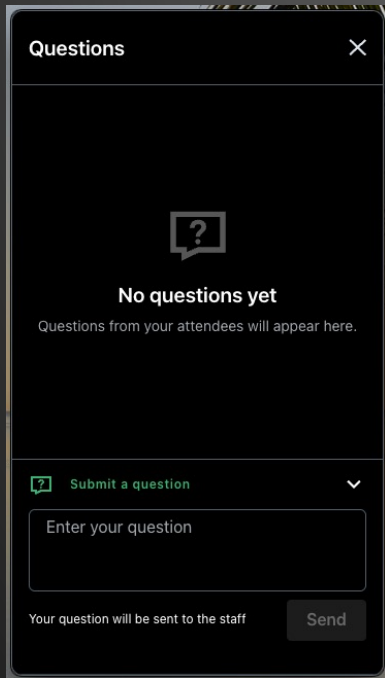


JOIN US ON DISCORD

<https://openntf.org/discord>



ASKING QUESTIONS



- First Question – Will this be recorded?
 - Yes, view on YouTube!!!
 - <https://www.youtube.com/user/OpenNTF>
- Use the Questions Pane in GoToWebinar
- We will get to your questions at the end of the webinar
- The speakers will respond to your questions verbally
 - (not in the Questions pane)
- Please keep all questions related to topics that our speakers are discussing
- Unrelated Question => post at:
 - <https://openntf.org/discord>

**Share
your
Dev
Tips!**

PRESENTATION

Domino for Newbies: Development II



YOUR PRESENTERS

Jesse Gallagher

- Domino dev since around V7
- HCL Lifetime Ambassador and former IBM Champion
- OpenNTF Board and IP Manager 2014-2025
- Philadelphia, PA, USA
- <https://frostillic.us>
- @jesse@pub.frostillic.us

Graham Acres

- Notes / Domino app architect since 1992
- HCL Ambassador, former IBM Champion
- Canadian User Group (C3UG)
- OpenNTF Board 2018-2025
- Vancouver, Canada



TOPICS

- Who is this presentation for?
- Views, Views, Views
- Roles
- Templates
- Toolbars
- Subforms
- Agents
- How Do I Find Stuff?
- Q&A



THIS PRESENTATION IS FOR...

- People who are new to the Domino world
 - You have a new job as a Domino developer
 - You inherit the dusty old server in the corner ... and something just broke
- Some level of development experience
 - Excel Macros
 - Full Stack devs
 - Java devs



VIEW BASICS

Views in Domino

- * One of the two primary client UI elements, along with forms
- * Also used for web UIs in both legacy and XPages
- * Also used for data access by essentially everything in Domino

Create			
	Web Path	NSF Path	Servers
✓	/blog	jesse/jblog.nsf	CN=Kalgan/O=Frost
✓	/browser	dev/jakartabrowser.nsf	CN=Kalgan/O=Frost
✓	/browser2	dev/jakartabrowser2.nsf	CN=Kalgan/O=Frost
✓	/fakemodule	i/do/not/exist.nsf	CN=FakeServer/O=Frost
✓	/magpie	jesse/gog.nsf	CN=Kalgan/O=Frost
✓	/maven	dev/mvn.nsf	CN=Kalgan/O=Frost
✓	/moduleapp	dev/jakarta/mod.nsf	CN=Kalgan/O=Frost
✓	/moduleapp2	dev/jakarta/mod2.nsf	CN=Kalgan/O=Frost
✗	/moduleexample	dev/jakarta.nsf	CN=Kalgan/O=Frost
✓	/moduleexample2	dev/jakarta.nsf	CN=Kalgan/O=Frost

What Is A View?

- * Views have two primary components:
 - * The selection formula, defining what documents can appear in the view
 - * The columns, defining the data pulled from those documents and how it's presented
- * They're *kind of* like SQL views, but differ greatly in mechanics
- * Also similar to NoSQL map/reduce operations

Select Formulas

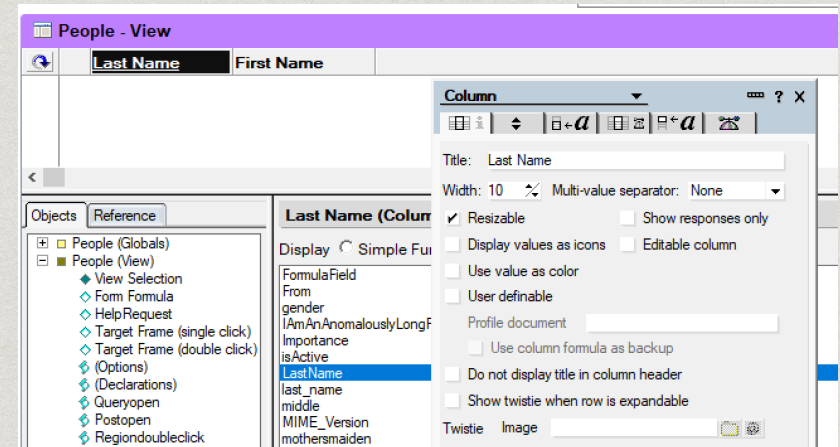
- Written using the Notes formula language, which is also used for commands and value computation
- Examples:
 - `SELECT @All` - selects all documents in the DB
 - `SELECT Form="Person"` - selects all documents using the "Person" form
 - `SELECT Form="Person" & Department="IT"` - same as above, but only where the "Department" item is "IT"
 - `SELECT Form="Person" | @AllChildren` - all "Person" documents, plus any immediate children regardless of form
- You can also use "Simple Search", which is a semi-graphical way to filter documents
 - It's best to get used to formulas, though

Select Formulas, cont'd

- * It's a good idea to start all selections with Form="Whatever" unless you have a reason to do otherwise
 - Good for clarity, reduces unexpected inclusions, and is useful for DQL
- * Never* use "current time" formulas: @Now, @Today, etc.
 - The view is rebuilt every time it's accessed, ruining performance
 - * you *can*, but only if you know what you're doing
- * Also avoid user-specific formulas like @UserName
 - These will usually be the name of the server building the view
- * You can't use @DbLookup and friends in view selections or columns

Columns

- * Data from documents is extracted by defining columns
- * In the basic case, this is one field from the document
- * Can also be a formula, like `FirstName + " " + LastName`
- * Can't* be a rich text or similar field
 - * usually



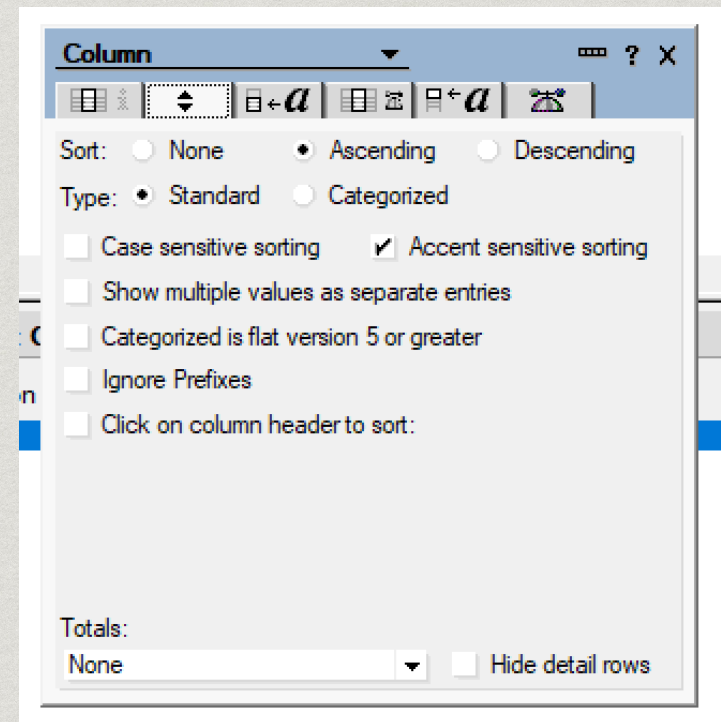
Columns, Side Tangent

- * See the little "refresh" icon in the top left when editing a view in Designer?
- * It's meant to show you a preview of the view contents inline, to help your work
- * Do not trust it
 - * Do not use it
 - * It is a liar
 - * And it always has been



Columns, cont'd

- * Columns can be marked as sorted and, potentially, categorized
 - * More on categories later
- * Having sorted columns is needed for programmatic lookups by key
- * "Totals" allows for some basic operations on number columns - total, average, etc.



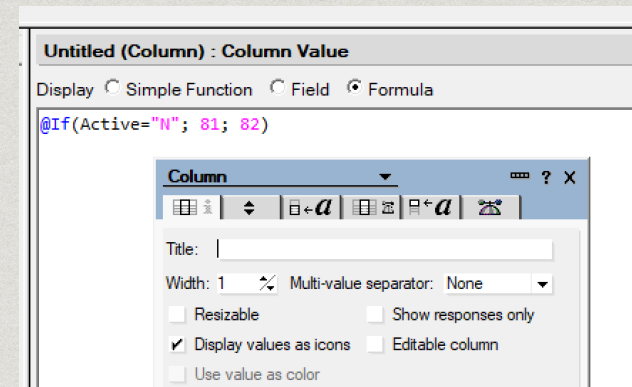
Columns, cont'd

- * Categories significantly change the layout of the view
- * They count as sorted keys for programmatic use, but also special category-specific needs
- * For UI views, check "show twistie" for the column - everyone likes twisties
- * Categories can have multiple levels
 - Values with a "\" in them are automatically split
 - Multiple columns can be categorized

	<u>Last Name</u>	First Name
▼ HR		
	Bobson	Bob
▼ IT		
	Fooson	Foo
	Steveson	Steve
▼ Legal		
	Danson	Dan

Columns, cont'd

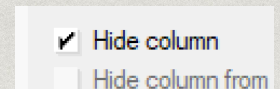
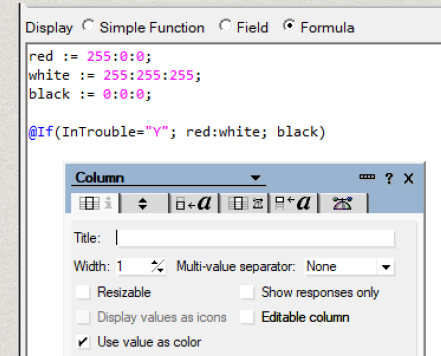
- * Columns can be configured to show as an icon
 - * A number represents a stock icon from the ["Displaying an icon in a column" help document](#)
 - * A string represents an image resource in the view's DB



	Last Name	First Name
▼ HR		
✓	Bobson	Bob
▼ IT		
✓	Fooson	Foo
✓	Steveson	Steve
▼ Legal		
✗	Danson	Dan

Columns, cont'd

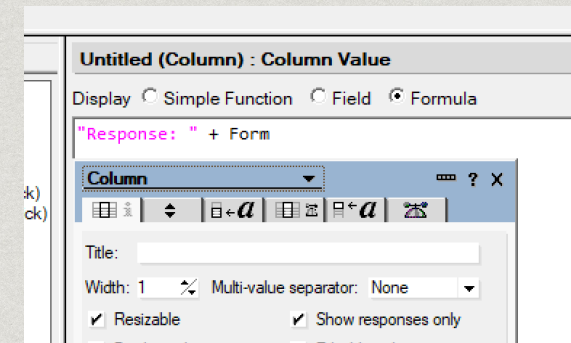
- Columns can be configured to define the text and background color for subsequent columns
 - Best to mark this column as hidden
- Colors are red:green:blue number sets
 - Three numbers alone means just the text color
 - Six colors means background followed by text color
 - "-1:-1:-1" is "pass through"
- This is fun, but don't* go too nuts with it
 - * unless you're actually good at it



	Last Name	First Name
▼ HR		
✓	Bobson	Bob
▼ IT		
✓	Fooson	Foo
✓	Steveson	Steve
▼ Legal		
✗	Danson	Dan

Columns, cont'd

- * Columns can be configured to apply specifically to response documents
 - * You get one per view
 - * Previous columns also apply to responses, but not subsequent ones
- * These get an automatic indent, and can show a multi-level hierarchy
- * They can be fiddly to get right



	<u>Last Name</u>	First Name
▼ HR		
✓	Bobson	Bob
▼ IT		
✓	Fooson	Foo
✓	Steveson	Steve
▼ Legal		
✗ ▼	Danson	Dan
	Response: Comment	
	Response: Comment	
	Response: Comment	

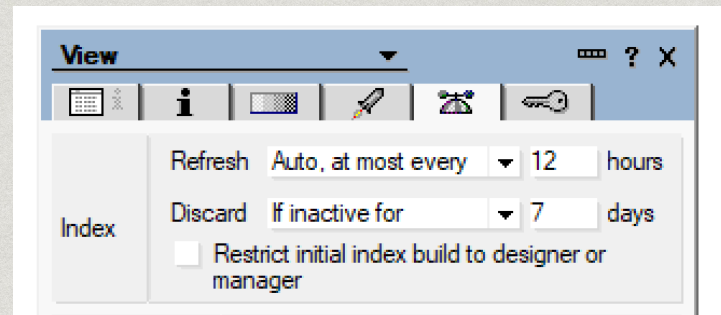
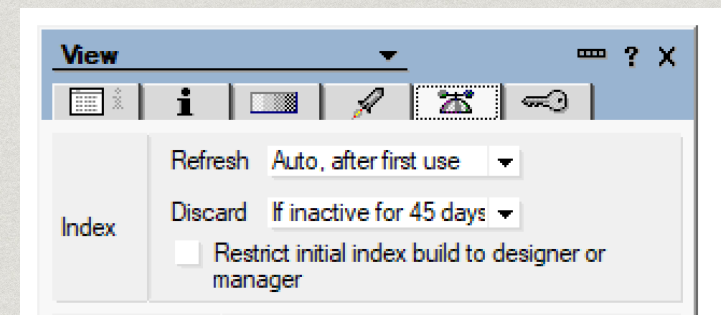
Folders

- * Folders are very similar to views, but don't have a selection formula
- * Documents are added to them either manually (like in the mail application) or programmatically (such as via agents)
- * All other aspects of views apply: columns, categories, indexes, and so forth

VIEW INTERMEDIATES

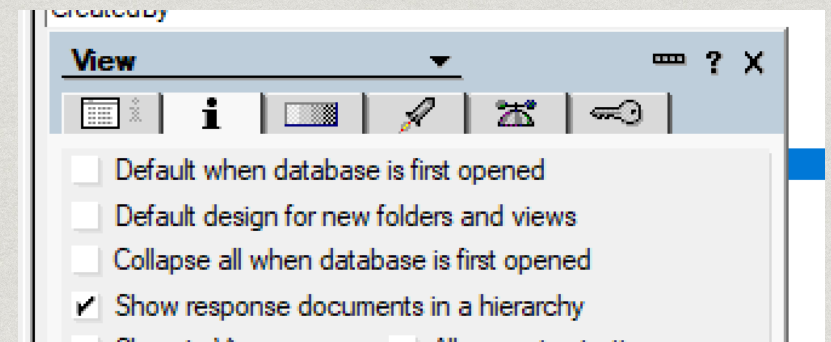
View Indexes

- View indexes are generally maintained by the server
- In the normal case, you don't have to worry about it
 - make your view and it'll be kept up to date
- Some things can slow or trip up this process
 - Many documents
 - Too many categories
 - Very complex formulas
- Manually configure the index in special cases
- Use Shift-F9 to force a rebuild, or Ctrl-Shift-F9 to rebuild all views in the DB (takes a while, since it happens locally)



Response Documents

- Response documents have to be selected in the view
 - @AllChildren and @AllDescendants will specially select children of otherwise-selected docs
- Response documents without their parent in the view will not appear by default
 - Deselect "Show response documents in a hierarchy" to treat them the same as other docs
- In the UI, the selected doc is the target parent for new responses



Utility Views

- * It's usually a good idea to have some developer-focused "utility" views:
 - All documents in the DB with basic info, potentially sortable by created and modified date
 - All documents categorized by reader and author fields
 - Views for otherwise-hidden "keyword" or configuration documents
 - A "Trash" view for soft-deleted documents (more later)

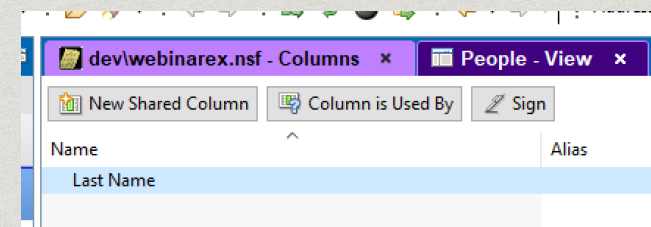
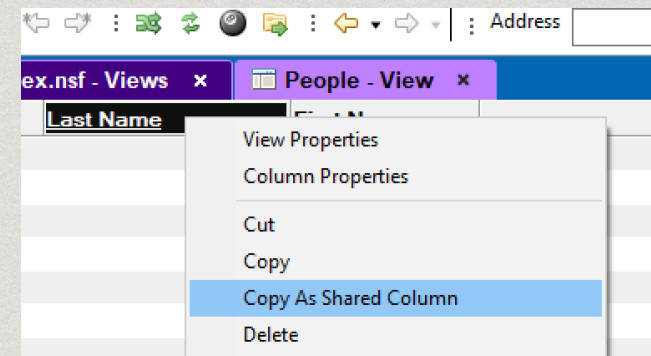
#	Form	Size	Created	Modified
1	Person	1K	09/17/2025 11:01:28 AM	09/17/2025 11:01:34 AM
2	Person	1K	09/17/2025 11:01:35 AM	09/17/2025 11:08:01 AM
3	Person	1K	09/17/2025 11:02:49 AM	09/17/2025 11:02:54 AM
4	Person	1K	09/17/2025 11:03:01 AM	09/17/2025 11:03:21 AM
4.1	Comment	1K	09/17/2025 11:31:30 AM	09/17/2025 11:31:31 AM
4.1.1	Comment	1K	09/17/2025 11:31:36 AM	09/17/2025 11:31:37 AM
4.2	Comment	1K	09/17/2025 11:31:58 AM	09/17/2025 11:31:59 AM

Hidden Views

- * Naming a view with parentheses around the name (e.g. "(My Secret View)") will hide it from the default list
- * These views can still be used programmatically or as embedded views, making this naming style perfect for that
- * You (or any user) can access these views by holding Ctrl-Shift when opening the DB or using "Go To..." in the View menu or workspace icon
 - * Most users won't do this, but you should know it's possible

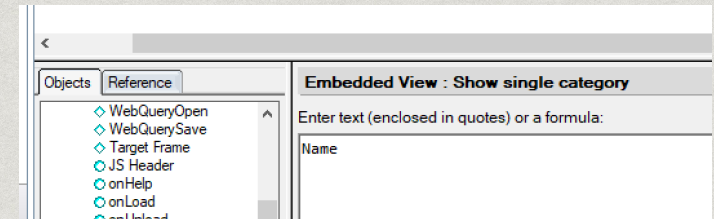
Shared Columns

- * A column can be exported as shared (or a new one can be made manually)
- * This is very useful for common logic: colors/icons for specific document types, repeated details used in several views
- * As with many things, don't go too overboard



Embedded Views

- * Any view can be embedded on a Form or Page
- * This can be useful on its own, but pairs best with categorized views
- * Specify a "Show single category" formula based on the document contents
 - * Here, it's department name, showing all employees in that department



Department

First Name

Last Name	First Name
✓ Fooson	Foo
✓ Steveson	Steve

Calendar Views

- * A view can be marked as displaying as a Calendar
- * These are configured like normal views, but the first two columns are special:
 - * The first contains the start date/time of the event
 - * The second contains the event duration in minutes
- * These mostly make sense for scheduling apps

Style	Calendar ▼
-------	------------

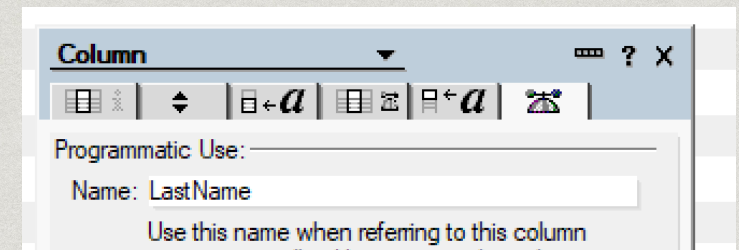
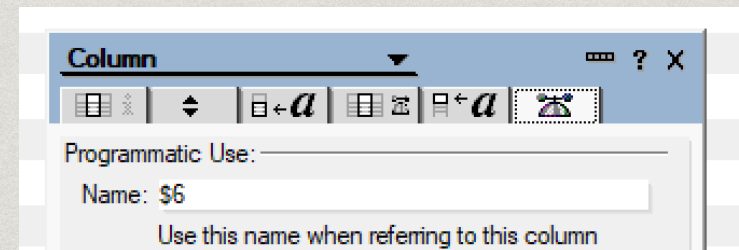
Date/Time (Column) : Column Value
Display <input type="radio"/> Simple Function <input type="radio"/> Field <input checked="" type="radio"/> Formula
<code>@TimeMerge(EventDate; EventTime)</code>

Duration (Column) : Column Value
Display <input type="radio"/> Simple Function <input type="radio"/> Field <input checked="" type="radio"/> Formula
<code>DurationHours * 60 + DurationMinutes</code>

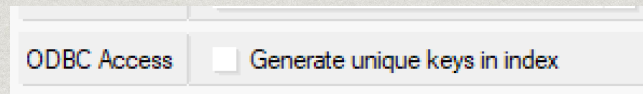
VIEW ADVANCED

Programmatic Name

- View columns have a "programmatic name"
- This is usually automatically set by Designer, but you can technically manually set one
- This usually doesn't matter, but comes up in XPages and other programming environments
- You need to care about it in two cases:
 - Two columns can't have the same name - sometimes Designer messes up, duplicating the column contents
 - If the name matches an item on the document, the view will use the item value regardless of the column formula



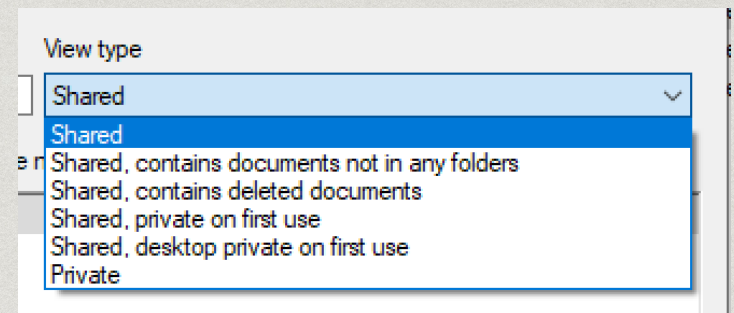
Unique Keys



- * This property is labeled "ODBC Access", but:
 - * You don't need to know what "ODBC Access" means
 - * It actually changes the way the view index is built significantly
- * Views can have multiple entries per "Key" - that is, the combination of all sorted columns in sequence
- * Setting this will (pretty much) make it so that only the first row per key is in the view
- * It's a bit wonky sometimes - either ignore it entirely or use it sparingly

Special View Types

- By default, views are "shared": they contain all matching docs and all users see the same view
- You can also select docs not in folders - mostly useful for the mil app
- You can also show soft-deleted documents (i.e. a "Trash" view)
- Private views are fiddly
 - "Private on first use" makes a copy on the server only the user sees
 - "Desktop private on first use" is like that but for only one Notes install
 - "Private" is for yourself only
 - You will likely rarely or never need these, and they come with caveats



ROLES

- View/form access
- Forms: Hide-when and controlled-access sections
- View column hide-when
- @UserRoles



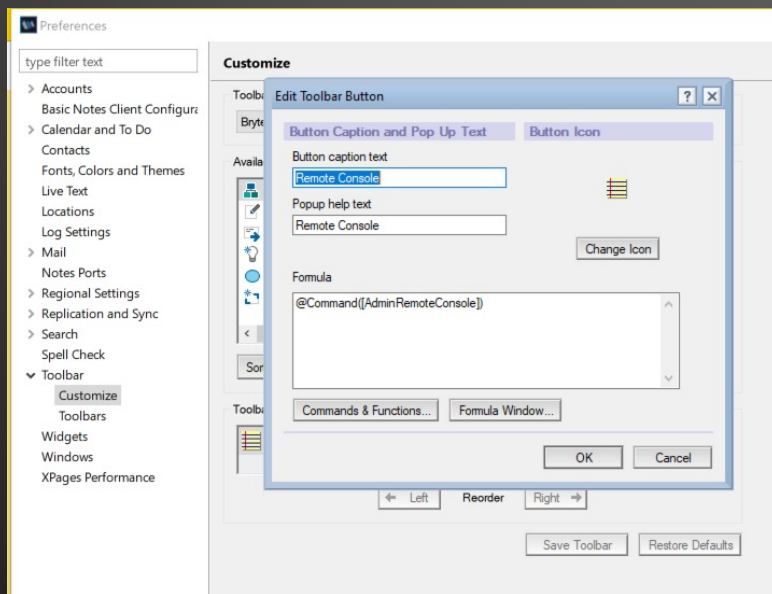
TEMPLATES

- How does inheritance work?
- Create a new template from an existing database
- Create a new database from a template
- Using inheritance for version control



TOOLBARS

- Standard Toolbars
 - File > Preferences > Toolbars
- Customizing Toolbars



SUBFORMS

- Computed Subforms



AGENTS

- Understanding Agent Types
 - Formula
 - Simple Actions
 - LotusScript
 - Imported Java
 - Java



HOW DO I FIND STUFF?

- How to search the existing code across an NSF for a server name, not agent by agent. Like when migrating servers and someone hard coded an old server name.
- Errors in the log
 - Server Log is Console logging
 - Searching may be a challenge
 - Is there an Agent Log?
 - <https://ab1osborne.blogspot.com/2025/09/colour-coding-lognsf.html>



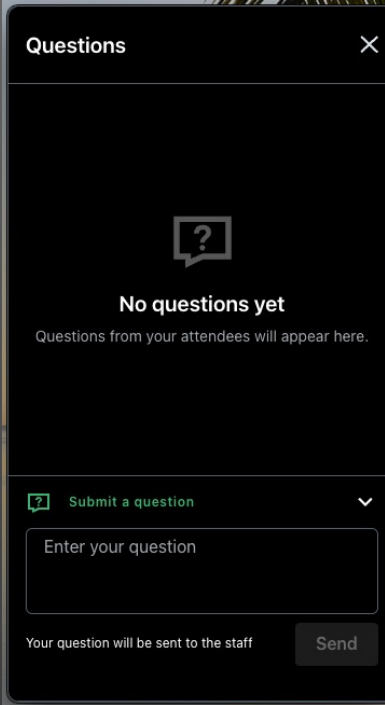
QUESTIONS?

Use the GoToWebinar Questions Pane

Please keep all questions related to the topics that our speakers are discussing!!!

Unrelated Question => post at:

<https://openntf.org/discord>



The screenshot shows a 'Questions' pane with a close button (X) in the top right corner. The main area displays a question icon (a speech bubble with a question mark) and the text 'No questions yet' followed by 'Questions from your attendees will appear here.' At the bottom, there is a 'Submit a question' section with a dropdown arrow, a text input field labeled 'Enter your question', and a 'Send' button. A small note at the bottom left of the pane states 'Your question will be sent to the staff'.

