



Source Sniffer - © Ferry Kranenburg

documentation v1.0

1. about this application

Source Sniffer is a Domino Designer extension written in Eclipse. It can search in the source code of a entire application, it supports Java, Javascript, Lotuscript and Formula languages. Xpages are completely decoded so code can be found there too.

All graphics and icons are designed by my wife ;) (Willemien Kranenburg). If you would like to use those icons in your own application you may, but let me know by sending me an e-mail @ ferry.kranenburg@bureaubos.nl.

2. about me

Source Sniffer is my latest project and is the successor of Lotuscript Manager (also available for download on OpenNTF). I spend three months on how to develop a plug-in in Eclipse for Lotus Domino. I did not have any experience with Java or Eclipse. If you are a Eclipse plug-in developer beginner than I would recommend you to visit the following sites:

- www.openntf.org - The catalog contains some nice examples to start with
- www.domiclipse.com - step by step tutorial to create a simple plug-in within Eclipse.
- www.mindoo.com - blog, contains some nice DDE plug-in examples
- www.lekkimworld.com - tutorials, tricks and hints about Eclipse developing

3. system requirements

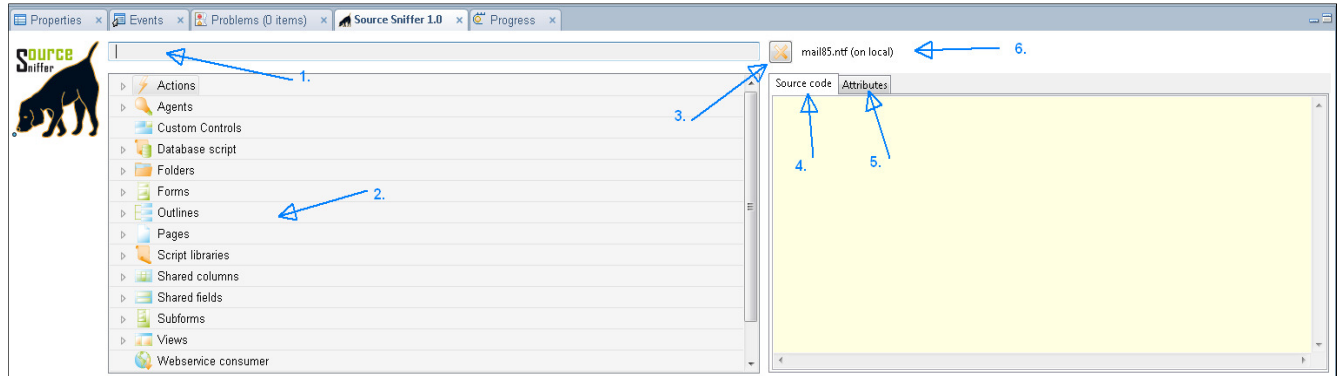
This plug-in requires Lotus Domino Designer 8.5.1

4. installation

- First download Source Sniffer from openntf and unpack the zip file.
- Make sure the policy ' Allow user initiated updates' is NOT active, otherwise this will not work. Locate the file {notes install dir}\framework\rcp\plugin_customization.ini and add the line `com.ibm.notes.branding/enable.update.ui=true` and restart the Notes client.
- From the main menu select File -> Application -> Install.
- Select search for new features to install.
- Add folder location and browse to the unpacked plug-in directory, go to the `org.openntf.sourcesniffer.update` directory
- Select next and check the application 'Source Sniffer'
- Accept the license and install the plug-in.

5. Source Sniffer - main application - quick guide

Source Sniffer add itself to the default Domino Designer perspective in Eclipse. You can find it next to the properties and events views (default part of Domino Designer in Eclipse). You can also find it by choosing 'Window' -> 'Show eclipse views' -> 'Other'.



1. type your search text to filter all elements on that text in their source code. Press ENTER to refresh the treewiew.

2. All design element that contains some code (java, javascript, lotusscript or formula) will be listed here. You can collapse all sections to get to the desired element.

3. Removes the current filter. No filter is being applied after this, so you should see all source code in your application.

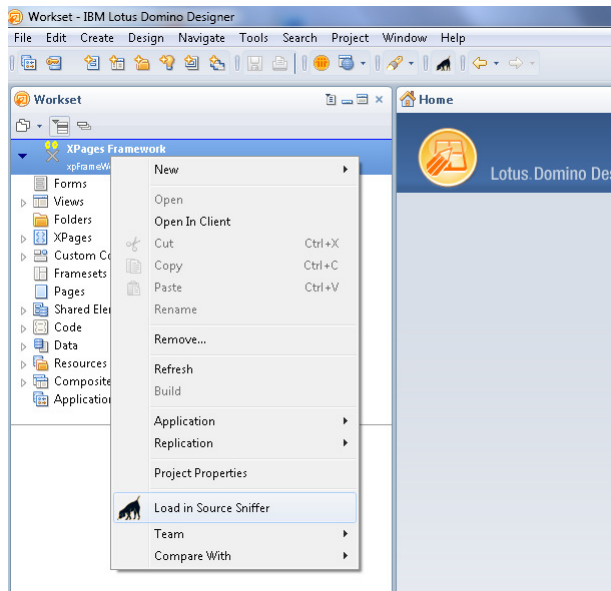
4. If you click on the lowest element of a design element you can view the corresponding source code. If a filter is applied you should see it in bold red color.

5. Some design element names are found in the attributes. For example, a field (dialog list) uses some view. The name of this view is found within attributes, not source code.

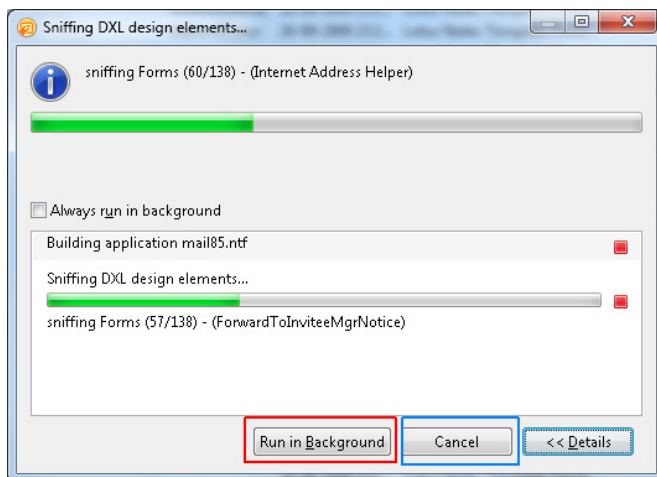
6. The currently loaded application.

6. using Source Sniffer - load a application in Source Sniffer

From within Domino Designer you can right-click on a application and choose 'Load in Source Sniffer' (1). All design elements will be loaded into Source Sniffer. You can cancel this progress by clicking cancel or hide this progress (to the progress tab) to continue working while Source Sniffer is loading the application (2).



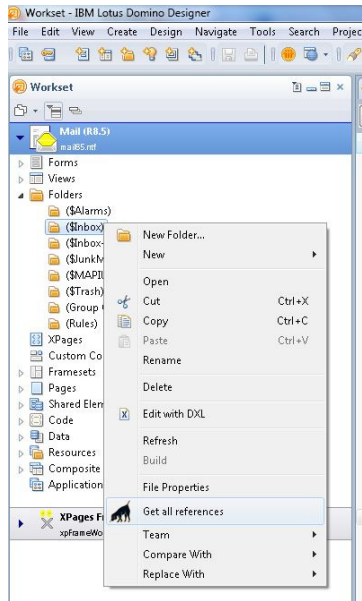
1. load in source sniffer



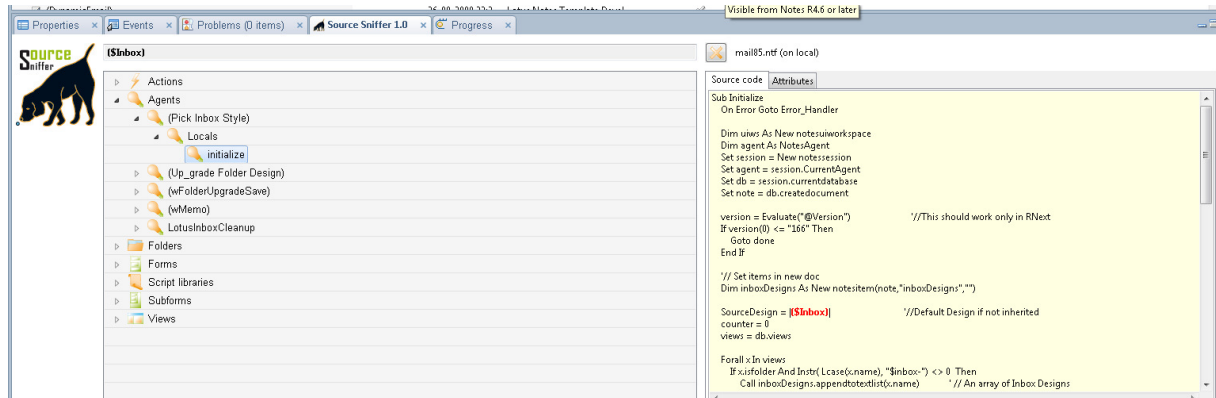
2. progress bar (=default Eclipse progress bar)

7. using Source Sniffer - get all references to the selected design element

Choose 'Get all references' if you right-click on a design element (3). If the application is currently loaded in Source Sniffer, it will load it automatically. It filters on the design element name in all code (4). You can edit the filter by editing it in the textbox and hitting ENTER. After ENTER the treeview will be refreshed and displays the new results based on your filter.



3. Get all references to currently selected design element



4. The filter shows all references to '\$Inbox' in your code

