

Demonstration Application for XPages in IBM Lotus Domino – V1.02 for OpenNTF.org

Documentation, March 3rd, 2010

Introduction:

As the name suggests the Demonstration Application for XPages is a web based IBM Lotus Domino R8.5.1 application used to demonstrate many aspects of the new XPages technology. Launched via a web browser, the user can navigate through the provided links menu and see how many of the XPages features might work on a real application.

The demo application can also be worked with in IBM Lotus Domino Designer R8.5.1. Here the user can see how the application is put together and inspire the user to reuse the XPages features displayed in their own Domino 8.5.1 applications.

The Demonstration Application for XPages has been released on Openntf.org under the Apache v2 license whose terms can be read here <http://www.apache.org/licenses/LICENSE-2.0.txt>



App Version: V1.02 (851) Release 8.5.1FP1 SHF20/February 10, 2010 Windows/32 UNKNOWN English (Ireland)

Demonstration Application for XPages in IBM Lotus Domino 851

Home
Ajax
Basic Properties
Container Controls
Convertors
Cool Stuff
Core Controls
Events
Javascript
Locale Test
Other Controls
Simple CRUD
Time Zone
Themes
Validators
View Categorisation
View Filtering
View Header Sort
Unread Marks
@Functions

Hello Paul Hannan, and welcome to the XPages Demonstration Application.
Select any link on the left hand side to continue...

XPages Resources:

Forums, Wikis and Blogs:
IBM Lotus Notes Domino 8.5 Forum
Lotus Notes and Domino Application Development Wiki
XPages Redbook
The XPages Blog
XPages on PlanetLotus
XPages in Twitter
YouAtNotes XPages Wiki
Knowledge Collection XPages
XPages questions on IQJam

Tutorials and Presentations:
XPages Tutorial from Domino Designer Help
Learning XPages by Declan Lynch
XPages Workshop
SHOW112 (LS10) How to Build an XPages Application from Start to Finish
SHOW106 (LS09) Building A Cool Web 2.0 Application With XPages
AD207 (LS09) Building an "XPages-Powered" IBM Lotus Domino Application

Downloads (Apps):
XPages Wiki (OpenNTF)
XPages Demo App (OpenNTF)
Lead Manager X (OpenNTF)
xTalk Discussion Forum (OpenNTF)
Discussion Next Gen (OpenNTF)
XPages Profiles (OpenNTF)
XPages Framework (OpenNTF)
TaskJam (OpenNTF)
Elenchus (OpenNTF)
John Mackey's Coding Examples

Downloads (Controls):
Login Control (OpenNTF)
Multi Attachment Custom Control (OpenNTF)
Simple Navigator Control (OpenNTF)

© Copyright IBM Corporation 2010. All rights reserved.

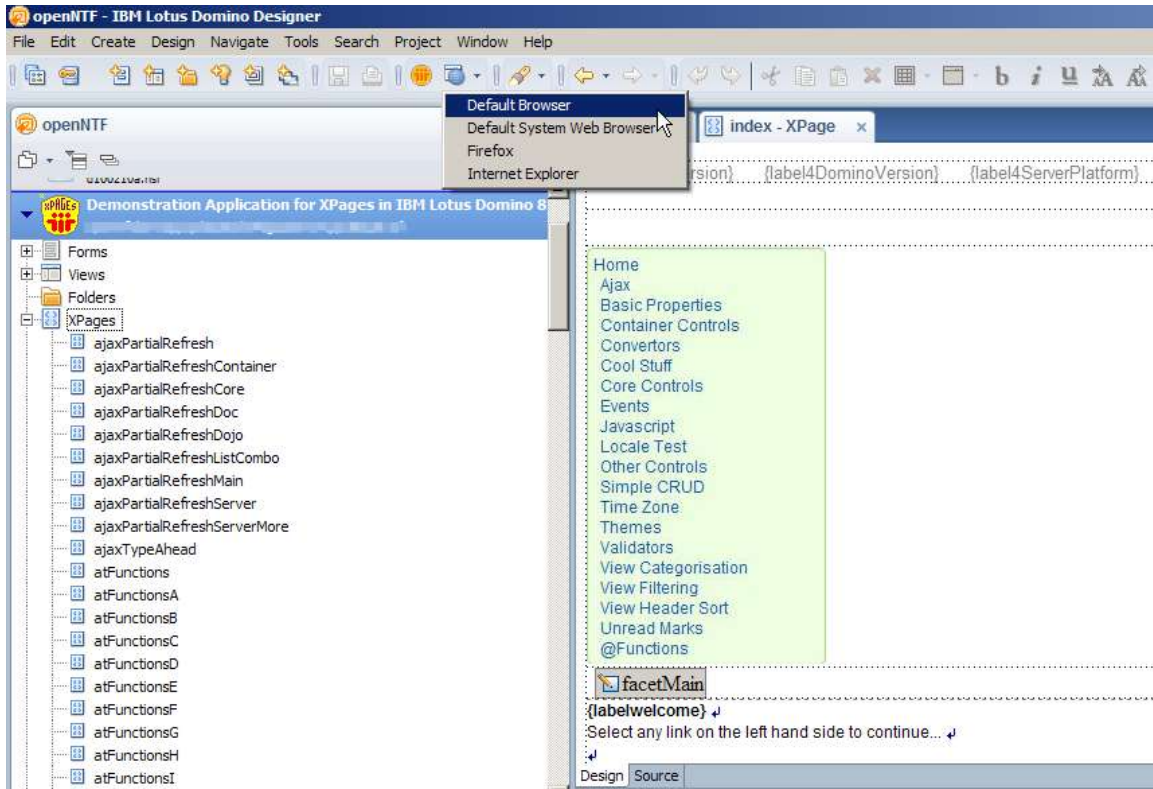
IBM Notes Domino 8.5.1, preferably with Fix Pack 1, is needed to run this application.

Get Stated:

On a web browser you can starting using this demo application in two ways, stored locally and previewed through Lotus Designer 8.5.1, or stored on Lotus Domino 8.5.1 server and launched through a web browser.

Preview from Designer:

Unzip XPages.nsf from the zip file to the data directory of your Designer client, then launch the application. In Designer select from the main menu Design, Preview in Web Browser.



This will launch the application on the desired web browser.

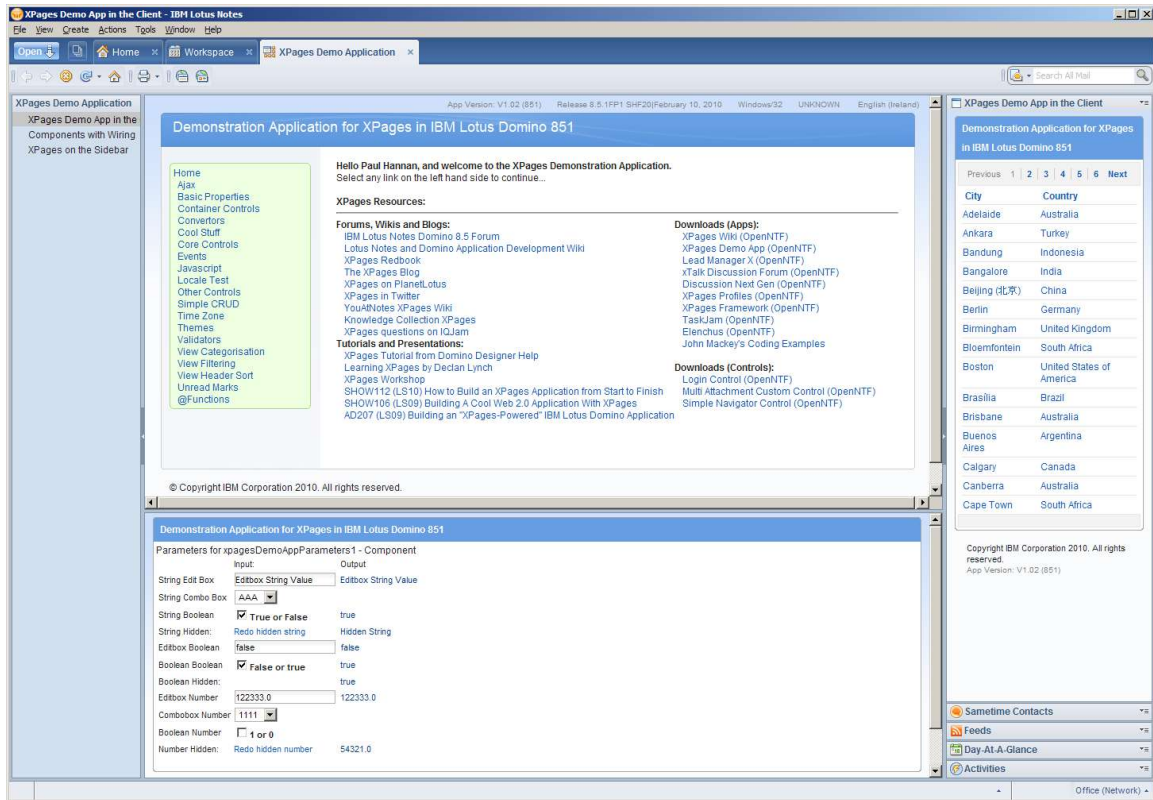
Adding the Demo App to your Domino server.

Unzip the application to the data directory of your Lotus Domino 8.5 server. And because this application is released on OpenNTF.org it is not signed with the standard Lotus Notes development signer, so you will need to sign the template with an id that is allowed to run agents/code on your server.

Then once that is done and the web server task is running on your server you can hit this application via a web browser with the following URL for example – <http://yourDomino85Server/XPages.nsf> and this will give you the welcome XPage.

XPages Applications in the Notes Client.

This update to the XPages Demo App includes a composite application and this is what is launched when run inside the Notes 8.5.1 client.



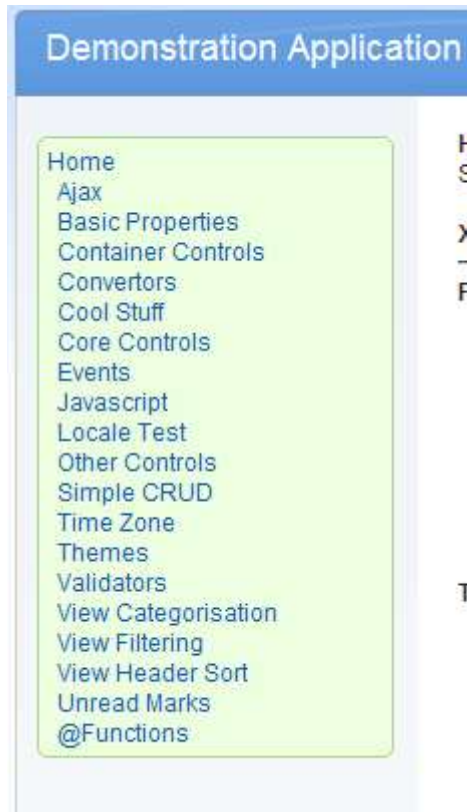
Features:

The header is a good place to start.



Here from left to right, the application version is displayed, then the Notes/Domino version on which this application is running, the web browser and version used, the operating system on which the application resides, and finally the locale being used to display the application.

The **menu** on the left hand side drives the application and this is a XPage feature in itself.



Using Ajax partial refresh some of these links, like 'Core Controls', expand sections on the menu to reveal more options. These in turn lead to more samples.

All of the samples are contained within their own XPage. And to explore more how these samples are put together the URL for that XPage is where you should start. For example, for the Ajax Partial Refresh XPage the URL will be <http://yourDominoServer/XPages.nsf/ajaxPartialRefresh.xsp> so the XPage to look for in Designer will be 'ajaxPartialRefresh.xsp'.


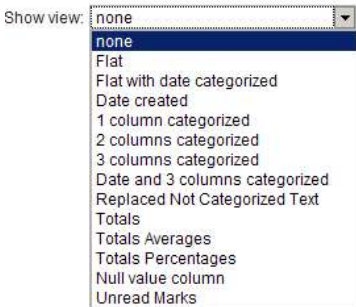
Then from here you can learn how the XPage is put together.

Here's a list of all the features covered in this application.

<i>Default Menu option:</i>	<i>Expanded options</i>	<i>Comments:</i>
Home	-	This link returns you to the default XPage.
Ajax	<ul style="list-style-type: none"> • Partial Refresh Quick Test • Partial Refresh Core Controls • Partial Refresh Containers 	

<i>Default Menu option:</i>	<i>Expanded options</i>	<i>Comments:</i>
	<ul style="list-style-type: none"> • Partial Refresh Dojo Controls • Partial Refresh Main • Partial Refresh Options • Partial Refresh More Options • Partial Refresh Toggle • Type Ahead 	
Basic Properties	<ul style="list-style-type: none"> • Accelerator Keys • Button Properties • Edit Box Properties • Link Properties • List Box Properties • Multiline Edit Box Properties • Tab Order • Time Zone • Validators • View Categorisation • View Header Sort 	
Container Controls	Panel Repeat Include Page Table View Data Table Tabbed Panel Section	
Convertors	Number Convertors Date Time Convertors Mask Convertors	
Core Controls	Edit Box	This section gives examples of all the core controls from

<i>Default Menu option:</i>	<i>Expanded options</i>	<i>Comments:</i>
	Rich Text Multiline Edit Box Button List Box Combo Box Check Box Radio Button Link Label Computed Field Image Attachments Date Time Picker Display Error Display Errors	the palette.
Locale Test	-	This is an example that'll allow you to change the locale under which this application gets displayed.
Other Controls	Checkbox Group Pagers Radio Button Group	
Simple CRUD	Simple Test	This is sample that tests the very basic functionality of XPages where a document is Created, then Read, Updated and finally Deleted (CRUD).
Time Zone	-	Like the locale test this sample changes the timezone of the application.
Validators	-	This sample runs through all of the Validators used in XPages. And for this application all the validation is done server

<i>Default Menu option:</i>	<i>Expanded options</i>	<i>Comments:</i>
		<p>side but you can switch this to perform client side by choosing the option in the Application Properties in the Pages Tab.</p> 
View Categorization	-	<p>This XPage runs through many samples for Views, all driven from the drop-down.</p> 
View Filtering	Category Filter Key Key - Exact Match	
View Header Sort	-	<p>Here create as many documents as you wish and then see how they sort on the fly through the header.</p>
Unread Marks		
@Functions	@A* @B* @C* @D* @E* @F* @G* @H* @I* @L*	<p>Not all @Functions available in XPages have samples here. This is a work in progress.</p>

<i>Default Menu option:</i>	<i>Expanded options</i>	<i>Comments:</i>
	@M* @N* @P* @R* @S* @T* @U* @W* @Y*	

App Version: V1.02 (851) Release 8.5.1FP1 SHF20|February 10, 2010 Windows/32 FIREFOX 3.6 English (Ireland)

Demonstration Application for XPages in IBM Lotus Domino 851

Home
 Ajax
 Basic Properties
 Container Controls
 Convertors
 Cool Stuff
 Core Controls
 Events
 Javascript
 Locale Test
 Other Controls
 Simple CRUD
 Time Zone
 Themes
 Validators
 View Categorisation
 View Filtering
 View Header Sort
 Unread Marks
 @Functions

Hello Anonymous, and welcome to the XPages Demonstration Application.
 Select any link on the left hand side to continue...

XPages Resources:

Forums, Wikis and Blogs:
 IBM Lotus Notes Domino 8.5 Forum
 Lotus Notes and Domino Application Development Wiki
 XPages Redbook
 The XPages Blog
 XPages on PlanetLotus
 XPages in Twitter
 YouAtNotes XPages Wiki
 Knowledge Collection XPages
 XPages questions on IQJam

Tutorials and Presentations:
 XPages Tutorial from Domino Designer Help
 Learning XPages by Declan Lynch
 XPages Workshop
 SHOW112 (LS10) How to Build an XPages Application from Start to Finish
 SHOW106 (LS09) Building A Cool Web 2.0 Application With XPages
 AD207 (LS09) Building an "XPages-Powered" IBM Lotus Domino Application

Downloads (Apps):
 XPages Wiki (OpenNTF)
 XPages Demo App (OpenNTF)
 Lead Manager X (OpenNTF)
 xTalk Discussion Forum (OpenNTF)
 Discussion Next Gen (OpenNTF)
 XPages Profiles (OpenNTF)
 XPages Framework (OpenNTF)
 TaskJam (OpenNTF)
 Elenchus (OpenNTF)
 John Mackey's Coding Examples

Downloads (Controls):
 Login Control (OpenNTF)
 Multi Attachment Custom Control (OpenNTF)
 Simple Navigator Control (OpenNTF)

© Copyright IBM Corporation 2010. All rights reserved.

Sample content driven through this menu which uses Ajax partial refresh.

Here are links to just some of the main XPages resources on the web.

XPages Demo App in the Client - IBM Lotus Notes

File View Create Actions Tools Window Help

Open Home Workspace Paul Hannan - Mail XPages Demo Application

App Version: V1.02 (851) Release 8.5.1.FP1 SHF20/February 10, 2010 Window32 UNKNOWN English (us)

XPages Demo Application
XPages Demo App in the Client
Components with Wiring
XPages on the Sidebar

Sample Composite App pages.

Main Content

A XPage Component in the Sidebar

Sample Component for Parameters

Demonstration Application for XPages in IBM Lotus Domino 851

Hello Paul Hannan, and welcome to the XPages Demonstration Application. Select any link on the left hand side to continue...

XPages Resources:

Forums, Wikis and Blogs:
IBM Lotus Notes Domino 8.5 Forum
Lotus Notes and Domino Application Development Wiki
XPages Redbook:
The XPages Blog
XPages on PlanetLotus
XPages in Twitter
You@Notes XPages Wiki
Knowledge Collection XPages
XPages questions on iQJam

Tutorials and Presentations:
XPages Tutorial from Domino Designer Help
Learning XPages by Declan Lynch
XPages Workshop
SHOW112 (LS10) How to Build an XPages Application from Start to Finish
SHOW106 (LS09) Building A Cool Web 2.0 Application With XPages
AD207 (LS09) Building an "XPages-Powered" IBM Lotus Domino Application

Downloads (Apps):
XPages Wiki (OpenNTF)
XPages Demo App (OpenNTF)
Lead Manager X (OpenNTF)
iTalk Discussion Forum (OpenNTF)
Discussion Next Gen (OpenNTF)
XPages Profiles (OpenNTF)
XPages Framework (OpenNTF)
TaskJam (OpenNTF)
Elenchus (OpenNTF)
John Mackey's Coding Examples

Downloads (Controls):
Login Control (OpenNTF)
Multi Attachment Custom Control (OpenNTF)
Simple Navigator Control (OpenNTF)

© Copyright IBM Corporation 2010. All rights reserved.

Parameters for xpagesDemoAppParameters1 - Component

Input	Output
String Edit Box	Editbox String Value
String Combo Box	AAA
String Boolean	<input checked="" type="checkbox"/> True or False true
String Hidden:	Redo hidden string Hidden String
Editbox Boolean	false false
Boolean Boolean	<input checked="" type="checkbox"/> False or true true
Boolean Hidden:	true true
Editbox Number	122333.0 122333.0
Combo box Number	1111
Boolean Number	<input type="checkbox"/> 1 or 0
Number Hidden:	Redo hidden number 54321.0

© Copyright IBM Corporation 2010. All rights reserved.
App Version: V1.02 (851)

XPages Demo App in the Client
Demonstration Application for XPages in IBM Lotus Domino 851

City	Country
Adelaide	Australia
Ankara	Turkey
Bandung	Indonesia
Bangalore	India
Beijing (北京)	China
Berlin	Germany
Birmingham	United Kingdom
Bloemfontein	South Africa
Boston	United States of America
Brasilia	Brazil
Brisbane	Australia
Buenos Aires	Argentina
Calgary	Canada
Canberra	Australia
Cape Town	South Africa

© Copyright IBM Corporation 2010. All rights reserved.
App Version: V1.02 (851)

Sametime Contacts
Feeds
Day-At-A-Glance
Activities

Office (Network)

Components with Wiring - IBM Lotus Notes

File View Create Actions Tools Window Help

Open Home Workspace Paul Hannan - Mail XPages Demo Application

App Version: V1.02 (851) Release 8.5.1.FP1 SHF20/February 10, 2010 Window32 UNKNOWN English (us)

XPages Demo Application
XPages Demo App in the Client
Components with Wiring
XPages on the Sidebar

Wiring Component Samples

Publishing from a View Column

Wiring sample for types.

Demonstration Application for XPages in IBM Lotus Domino 851

Previous 1 | 2 | 3 | 4 | 5 | 6 | Next

City	Country
Chicago	United States of America
Cologne	Germany
Cork	Ireland
Córdoba	Argentina
Darwin	Australia
Delhi	India
Dublin	Ireland
Frankfurt	Germany
Galway	Ireland
Glasgow	United Kingdom
Guadalajara	Mexico
Guangzhou (广州)	China
Hamburg	Germany
Houston	United States of America
Incheon (인천(仁川))	South Korea

© Copyright IBM Corporation 2010. All rights reserved.
App Version: V1.02 (851)

Demonstration Application for XPages in IBM Lotus Domino 851

City: Baile Atha Cliath Mauris dignissim portitor dui id semper. Vestibulum ante ipsum primis in faucibus orci luctus et ultrices posuere cubilia Curae. Proin tempor faucibus purus sit amet aliquam. Vestibulum at urna metus. Curabitur porta interdum ante vitae rhoncus. Integer a nulla quis quam imperdiet molestie et eget sem. Mauris ornare, dolor et tempus suscipit, turpis arcu convallis risus, a commodo ljsacking risus nibh ac urna. Nunc eu nibh ut velit pretium vehicula. Praesent id mauris risus, sed tempus libero. Integer laculis condimentum accumsan. Praesent metus nibh, interdum et bibendum in, euismod interdum justo. Mauris egestas tempus ultrices. Nunc at ipsum at odio pretium lacinia.

© Copyright IBM Corporation 2010. All rights reserved.
App Version: V1.02 (851)

Demonstration Application for XPages in IBM Lotus Domino 851

Country: Federal Republic of Germany Pellentesque habitant morbi tristique senectus et netus et malesuada fames ac turpis egestas. Class aptent tacit sociosqu ad litora torquent per conubia nostra, per inceptos himenaeos. Etiam gravida feugiat varius. Praesent in odio nulla, nec viverra ligula. Morbi ac pharetra leo. Cras sit amet gravida orci. Phasellus consequat semper vehicula. Proin adipiscing pellentesque convallis. Nunc pellentesque mollis sapien eu dignissim. Vivamus ut elit massa. Fusce placerat porta sagittis. Quisque condimentum semper trincidunt. Vestibulum vitae cursus urna. In non mi metus. Nam vel dolor sit amet est consequat lobortis. Pellentesque facilisis est ut odio lobortis eget fermentum elit faucibus.

© Copyright IBM Corporation 2010. All rights reserved.
App Version: V1.02 (851)

Demonstration Application for XPages in IBM Lotus Domino 851

Publish a string: String

Publish a boolean: True False

Publish a number: Number

Publish JSON: JSON

© Copyright IBM Corporation 2010. All rights reserved.
App Version: V1.02 (851)

Demonstration Application for XPages in IBM Lotus Domino 851

Receive String: Test String | 1CRK7

Receive Boolean: true

Receive Number: 145.0

Receive JSON: Test value: TEST STRING

© Copyright IBM Corporation 2010. All rights reserved.
App Version: V1.02 (851)

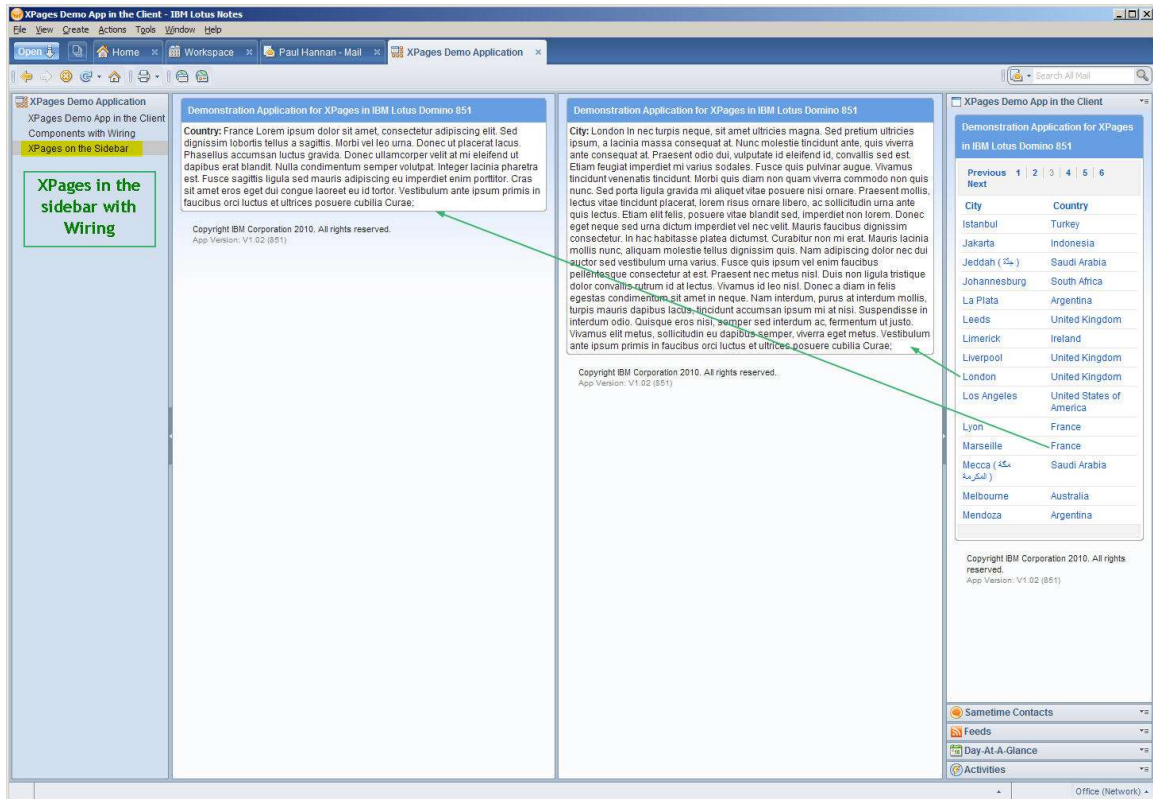
XPages Demo App in the Client
Demonstration Application for XPages in IBM Lotus Domino 851

City	Country
Adelaide	Australia
Ankara	Turkey
Bandung	Indonesia
Bangalore	India
Beijing (北京)	China
Berlin	Germany
Birmingham	United Kingdom
Bloemfontein	South Africa
Boston	United States of America
Brasilia	Brazil
Brisbane	Australia
Buenos Aires	Argentina
Calgary	Canada
Canberra	Australia
Cape Town	South Africa

© Copyright IBM Corporation 2010. All rights reserved.
App Version: V1.02 (851)

Sametime Contacts
Feeds
Day-At-A-Glance
Activities

Office (Network)



References:

For the main reference and feedback please use the page for this project in openNTF.

For more information on XPages...

- Try out the XPages Tutorial on Domino Designer 8.5 Help (Lotus Domino Designer XPages User Guide);
- Check out the [articles](#) and [videos](#) on the Designer Wiki;
- See what the blogs are saying about [XPages](#).