

SideBar Plug-in For IBM Lotus Enterprise Integrator

Main Details

Summary	SideBar Plug-in For IBM Lotus Enterprise Integrator provides (without changing mail context), in the side-shelf a direct and concise mechanism to monitor activities and perform key tasks on the activities.
Technology	Eclipse 3.4.0

Deployment

Update site	SideBarPluginForLotusEnterpriseIntegrator
Feature Name	SideBar Plug-in For Lotus Enterprise Integrator Feature
Feature ID	SideBar Plug-in For Lotus Enterprise Integrator
Component name	Leimonitor Plug-in
Component ID	com.ibm.lei.leimonitor

Pre-requisites

- Domino Server and LEI 7.x and 8.x
- Notes Client 8.x
- Plug-in will be using primarily DIIOP task of Domino ,Following are the requirements for plug-in :

1. The DIIOP (Domino IIOp) task on the Domino server must be running
2. In the Configuration Tab, Under 'Server' , All Server Documents, Open the Server document.
3. Go to Ports Tab/ Internet Ports.
4. On the the DIIOP tab, specifying the port number and enabling. Typically, the port number 63148 for DIIOP. LEI is designed to use port 63148 only.

Web	Directory	Mail	DIIOP	Remote Debug Manager	Server Controller
Remote Java / Domino IIOp					
TCP/IP port number:	63148				
TCP/IP port status:	Enabled				
Enforce server access settings:	Yes				
Authentication options:					
Name & password:	Yes				
Anonymous:	No				
SSL port number:	63149				
SSL port status:	Disabled				
Authentication options:					
Client certificate:	N/A				
Name & password:	Yes				
Anonymous:	No				

5. Steps to start DIIOP task with server

To start the DIIOP tasks with the server, make sure they are in the list of tasks for the ServerTasks variable in the Notes.ini file, which should be the case if the Server document is properly configured.

The Notes.ini file should contain a line similar to the following:

ServerTasks=Update, Replica, Router, AMgr, AdminP, Sched, DIIOP, HTTP, LDAP. LEI

From a running domino server console, use following commands for diiop task management:

1. load diiop
2. tell diiop quit
3. tell diiop refresh

Usage

To use Sidebar Plug-in for IBM LEI, plug-in must be installed in notes 8.x client.

Installation:

Enable the update/install UI in Notes Client using following preference:

- ✓ Edit Notes Install path/framework/rcp/plugin_customization.ini and add:
com.ibm.notes.branding/enable.update.ui=true
- ✓ File =>Application =>Install=>Search for new features to install
- ✓ Use “Add location” to give path of the location where plug-in folder is located.
- ✓ Install the plug-in
- ✓ If Notes Client does not have Install option, and client gets desktop settings via Policies from a Domino 8 Server, then following settings can be used:
Desktop settings => Basics => Provisioning => Allow User initiated updates

Preference settings:

After installation of plug-in ,use following steps to set the preference of plug-in.

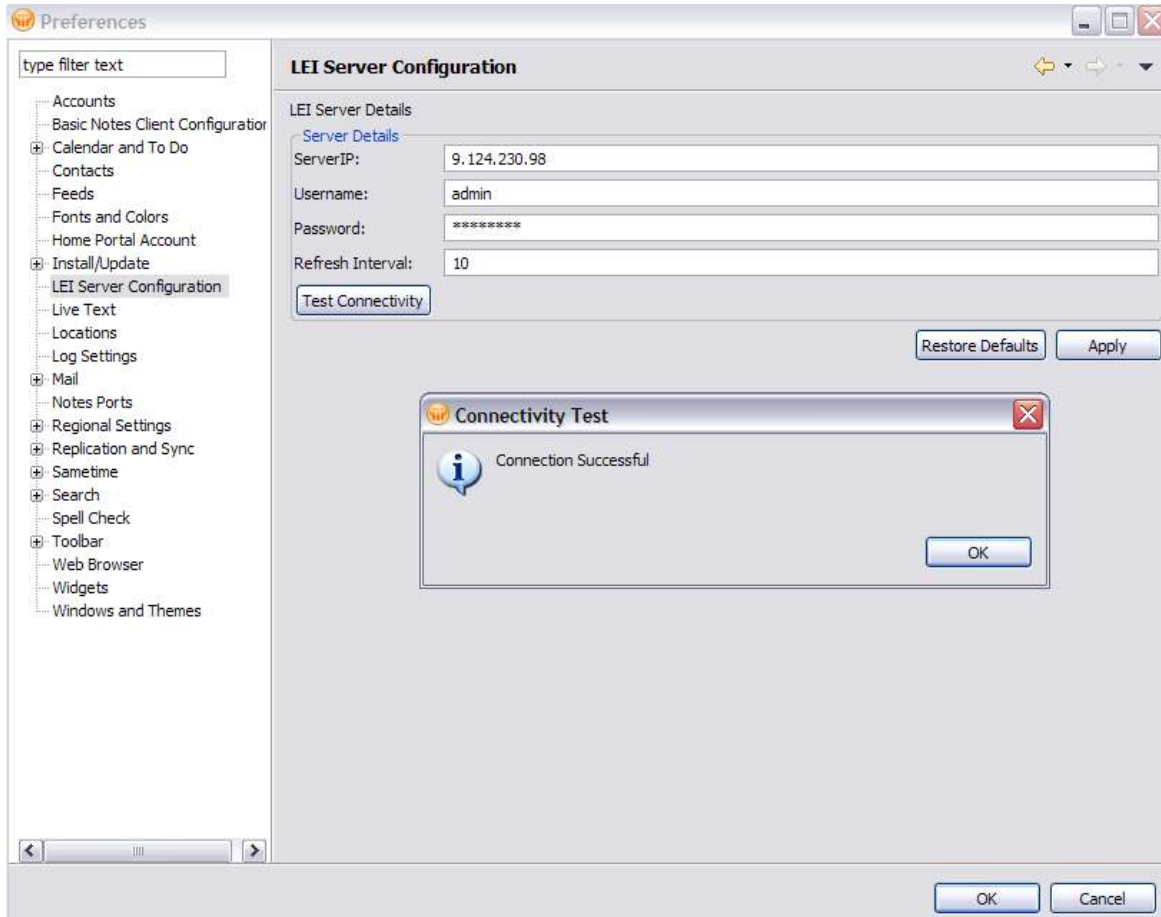
Goto File =>Preferences => LEI Server Configuration panel and specify

- ✓ Server IP/Name: Domino Server name or IP of host machine where domino/LEI is installed.
- ✓ Username: The username specified must have minimum editor access on LEI admin database (decsadm.nsf) and HTTP user account on domino server,where the LEI in installed.
- ✓ Password: The HTTP user account password.
- ✓ Refresh Interval: Specify the time interval in seconds, with which Active and Scheduled activities will synchronize with the LEI server. The minimum default value is 10 seconds.

Testing Connectivity:

Use “Test Connectivity” button on preference panel to confirm that specified user has access to Domino server.

Figure: Setting LEI Server preferences



Sample Usage

Image below shows a LEI activity monitor side-shelf.



This side-shelf shows Failed activities, Scheduled activities, Active activities and all activities on sever named mumbaiindians/ipl .On top panel serverName and serverTime are displayed. Activity actions like to 'Start activity' ,'Stop activity' and 'Refresh all activities' are provided on the toolbar. The server time, failed activities, scheduled activities and active activities view are refreshed based on refresh interval time specified in the preference. All activities can be refreshed using 'Refresh all activities' button on toolbar.