

Demonstration Application for XPages in IBM Lotus Domino – V1.0 for OpenNTF.org

Documentation, February 26th, 2009

Introduction:

As the name suggests the Demonstration Application for XPages is a web based IBM Lotus Domino R8.5 application used to demonstrate many aspects of the new XPages technology. Launched via a web browser, the user can navigate through the provided links menu and see how many of the XPages features might work on a real application.

The demo application can also be worked with in IBM Lotus Domino Designer R8.5. Here the user can see how the application is put together and inspire the user to reuse the XPages features displayed in their own Domino 8.5 applications.

The Demonstration Application for XPages has been released on Openntf.org under the Apache v2 license whose terms can be read here <http://www.apache.org/licenses/LICENSE-2.0.txt>

App Version: V1.0 for OpenNTF.org | Release 8.5|December 05, 2008 | FIREFOX 3.0.6 | Windows/32 | English (Ireland)

Demonstration Application for XPages in IBM Lotus Domino

- Home
- Ajax
- Basic Properties
- Core Controls
- Container Controls
- Locale Test
- Other Controls
- Simple CRUD
- Time Zone
- Validators
- View Categorisation
- View Header Sort
- @Functions

Hello Anonymous, and welcome to the Demonstration Application for XPages in IBM Lotus Domino.
Select any link on the left hand side to continue...

© Copyright IBM Corporation 2009.

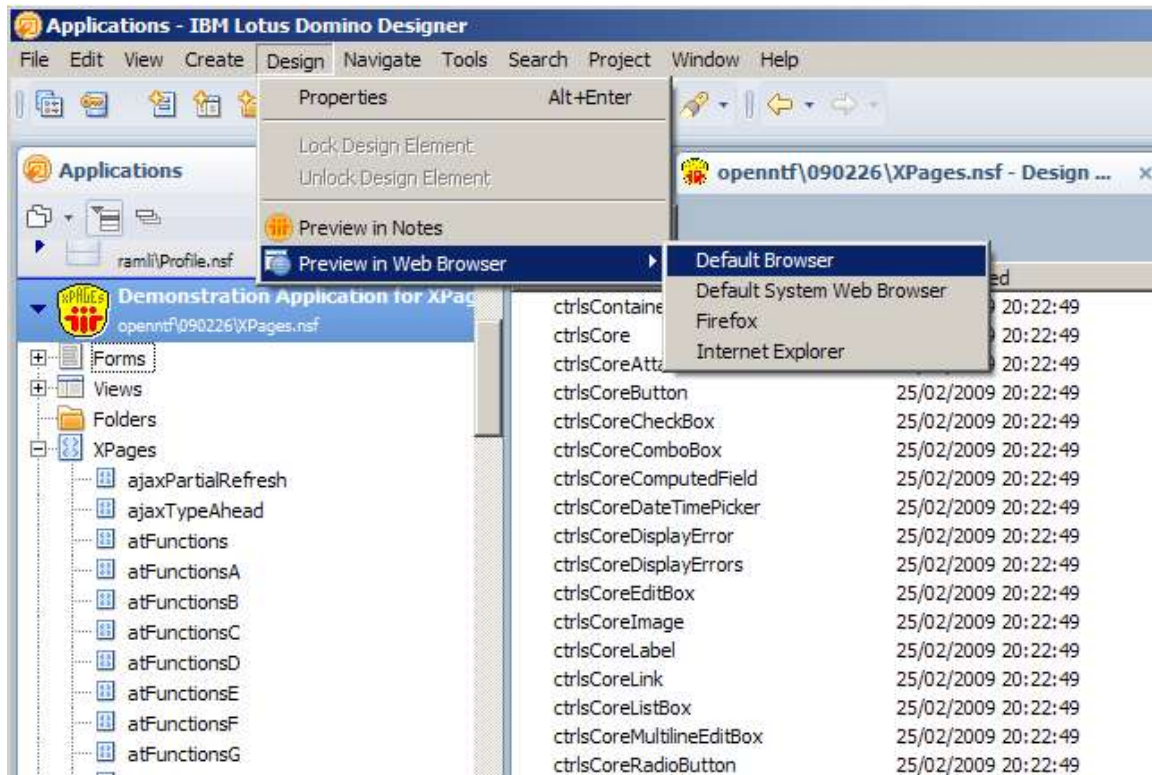
IBM Notes Domino 8.5 is needed to run this application.

Get Stated:

On a web browser you can starting using this demo application in two ways, stored locally and previewed through Lotus Designer 8.5, or stored on Lotus Domino 8.5 server and launched through a web browser.

Preview from Designer:

Unzip XPages.nsf from the zip file to the data directory of your Designer client, then launch the application. In Designer select from the main menu Design, Preview in Web Browser.



This will launch the application on the desired web browser.

Adding the Demo App to your Domino server.

Unzip the application to the data directory of your Lotus Domino 8.5 server. And because this application is released on OpenNTF.org it is not signed with the standard Lotus Notes development signer, so you will need to sign the template with an id that is allowed to run agents/code on your server.

Then once that is done and the web server task is running on your server you can hit this application via a web browser with the following URL for example – <http://yourDomino85Server/XPages.nsf> and this will give you the welcome XPage.

Features:

The header is a good place to start.



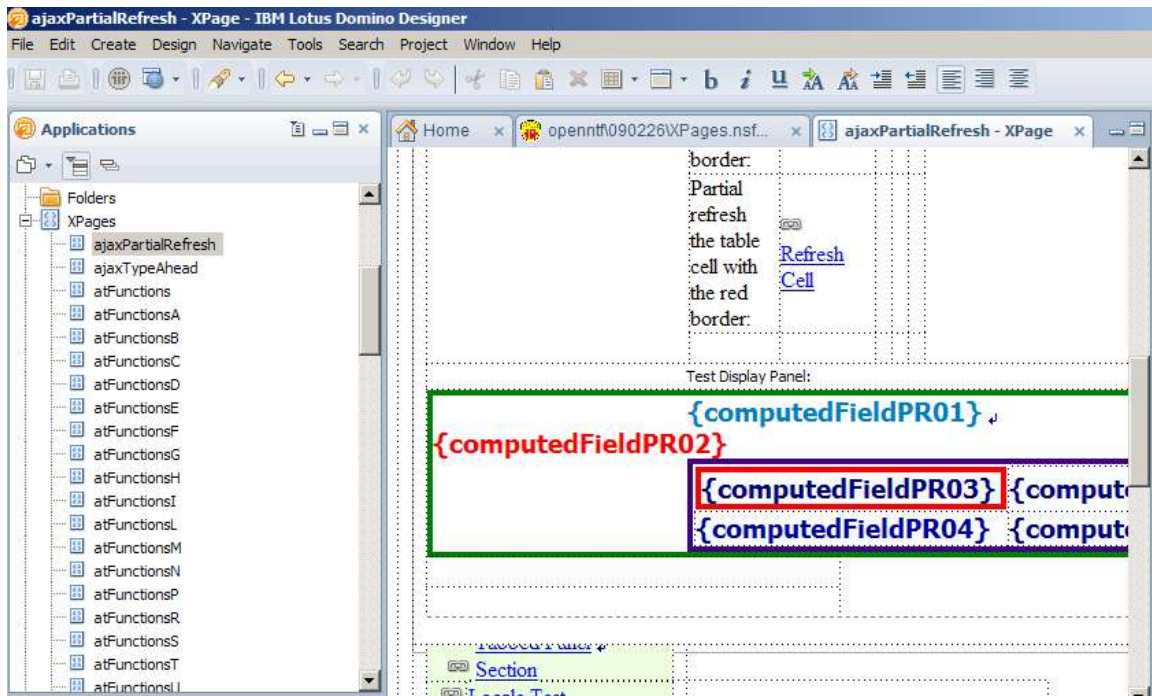
Here from left to right, the application version is displayed, then the Notes\Domino version on which this application is running, the web browser and version used, the operating system on which the application resides, and finally the locale being used to display the application.

The **menu** on the left hand side drives the application and this is a XPage feature in itself.



Using Ajax partial refresh some of these links, like 'Core Controls', expand sections on the menu to reveal more options. These in turn lead to more samples.

All of the samples are contained within their own XPage. And to explore more how these samples are put together the URL for that XPage is where you should start. For example, for the Ajax Partial Refresh XPage the URL will be <http://yourDominoServer/XPages.nsf/ajaxPartialRefresh.xsp> so the XPage to look for in Designer will be 'ajaxPartialRefresh.xsp'.


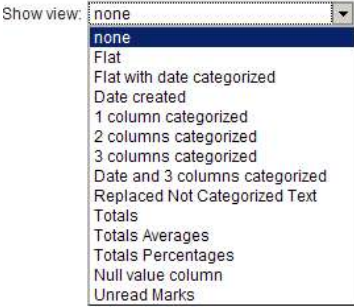


Then from here you can learn how the XPage is put together.

Here's a list of all the features covered in this application.

<i>Default Menu option:</i>	<i>Expanded options</i>	<i>Comments:</i>
Home	-	This link returns you to the default XPage.
Ajax	<ul style="list-style-type: none"> • Partial Refresh • Type Ahead 	
Basic Properties	<ul style="list-style-type: none"> • Accelerator Keys • Button Properties • Edit Box Properties • Link Properties • List Box Properties • Multiline Edit Box Properties • Tab Order 	
Core Controls	Edit Box Rich Text Multiline Edit Box Button	This section gives examples of all the core controls from the palette.

<i>Default Menu option:</i>	<i>Expanded options</i>	<i>Comments:</i>
	List Box Combo Box Check Box Radio Button Link Label Computed Field Image Attachments Date Time Picker Display Error Display Errors	
Container Controls	Panel Repeat Include Page Table View Data Table Tabbed Panel Section	
Locale Test	-	This is an example that'll allow you to change the locale under which this application gets displayed.
Other Controls	Checkbox Group Pagers Radio Button Group	
Simple CRUD	Simple Test	This is sample that tests the very basic functionality of XPages where a document is Created, then Read, Updated and finally Deleted (CRUD).
Time Zone	-	Like the locale test this

<i>Default Menu option:</i>	<i>Expanded options</i>	<i>Comments:</i>
		sample changes the timezone of the application.
Validators	-	<p>This sample runs through all of the Validators used in XPages.</p> <p>And for this application all the validation is done server side but you can switch this to perform client side by choosing the option in the Application Properties in the Pages Tab.</p> 
View Categorization	-	<p>This XPage runs through many samples for Views, all driven from the drop-down.</p> 
View Header Sort	-	Here create as many documents as you wish and then see how they sort on the fly through the header.
@Functions	@A* @B* @C* @D* @E* @F* @G* @H*	Not all @Functions available in XPages have samples here. This is a work in progress.

<i>Default Menu option:</i>	<i>Expanded options</i>	<i>Comments:</i>
	@I* @L* @M* @N* @P* @R* @S* @T* @U* @W* @Y*	

References:

For the main reference and feedback please use the page for this project in openNTF.

For more information on XPages...

- Try out the XPages Tutorial on Domino Designer 8.5 Help (Lotus Domino Designer XPages User Guide);
- Check out the [articles](#) and [videos](#) on the Designer Wiki;
- See what the blogs are saying about [XPages](#).