

# XPages Layout FrameWork (OneUI)

Steve Castledine

## Introduction

The XPage Layout Framework Template (OneUI) is designed as a “helper” template to allow you to build XPages applications using the built in XPages CSS framework (OneUI). It works equally in the client (8.5.1) and on the web.

When you first create an application you base it from this template to get the built in layouts (currently 2 and 3 columns layouts available with various different color themes). Alternatively you can copy and paste the design elements into an existing application and work from there.

This template is designed for use with IBM Lotus Domino 8.5.1 and above, however aside from some of the extra themes, it should work with 8.5.

This is a work in progress (although is production ready) and further wizards and features will be available over time (help required).

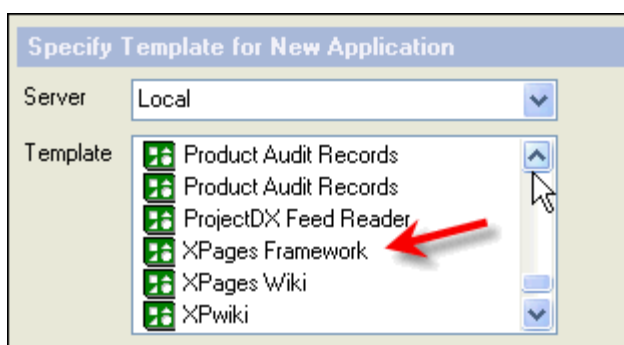
## Key Features

- Easy out of the box layout so you can start building your XPage application
- Has 2 or 3 column layouts simply by dragging the appropriate custom control onto your XPage
- Login and Search functionality
- Tab and Menu item highlighting
- Handles browser languages, so if you add the appropriate property file for that language XPages will use it automatically
- Uses standard css shipped with XPages, however also contains themes for new v2.1 of OneUI together with additional themes metal, gold, red, green
- Automatic Sidebar, links box, footers, tab menus custom controls built in. Others coming soon.

## Getting Started

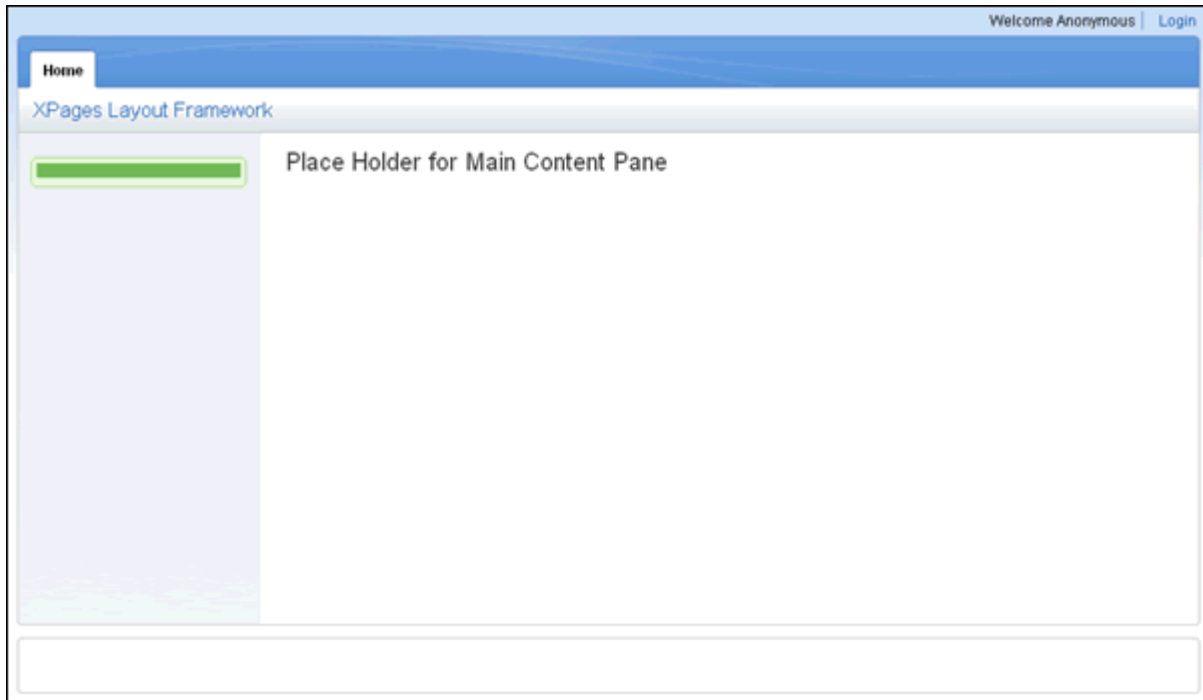
You should first sign the template with an id that has developer/code running rights on your server/environment.

You then create a new application using “File Application > New” and select the “XPages Framework” template.



The application will then launch within the Notes Client (8.5.1) and show the base layout. The same

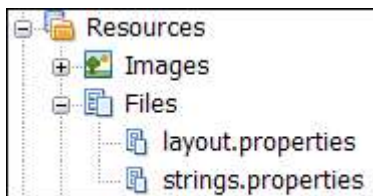
layout will also be visible from the web browser (and the default xpage name is default.xsp).



### Creating your first layout

The layout information is stored in a properties file. At the moment it is manually edited, however in future versions a wizard will be available to configure this.

The file is located in the template design under "Resources>Files" and is titled "layout.properties".



Inside the file you will see the defaults that you first see when you create a new application from the template. There are sections for Tabs at the top, main tabs, side bar menu, footer columns and buttons.

```
# Layout Properties

# Top Tabs
topTabs.title=
topTabs.link=

# Main Tabs
mainTabs.title=Home
mainTabs.link=default.xsp

# Side Bar Menu
sideBarMenu.title=
sideBarMenu.link=

# Footer Columns
footerColumn.headers=
footerColumn1.links=
footerColumn1.titles=

# Global buttons
globalButtons.title=
globalButtons.link=
```

Each item is a comma separated list. So to add more main tabs you would use:

```
mainTabs.title=Home,Page 1,Page 2
mainTabs.link=default.xsp,page1.xsp,page2.xsp
```

For Footers, footerColumn.headers is also a comma separated list and decides how many columns are created. You then need to add footerColumn(x).links and footerColumn(x).titles as comma separated lists to add the items you require (see images above and below).

An example layout is:

```
# Layout Properties

# Top Tabs
topTabs.title=Top Tab 1, Top Tab 2, Top Tab 3, Top Tab 4
topTabs.link=default.xsp,default.xsp,default.xsp,default.xsp

# Main Tabs
mainTabs.title=Main Tab 1,Main Tab 2
mainTabs.link=default.xsp,default.xsp

# Side Bar Menu
sideBarMenu.title=Side Bar Menu 1,Side Bar Menu 2,Side Bar Menu 3
sideBarMenu.link=default.xsp,default.xsp,default.xsp

# Footer Columns
footerColumn.headers=Footer Column 1, Footer Column 2
footerColumn1.links=default.xsp,resetcache.xsp
footerColumn1.titles=Link 1,Reset Cache
footerColumn2.links=default.xsp,default.xsp
footerColumn2.titles=Link 1,Link 2

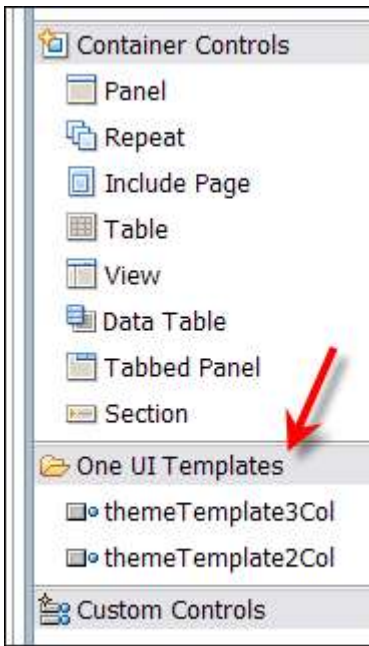
# Global buttons
globalButtons.title=Button 1
globalButtons.link=default.xsp
```

One **important** thing to note is the layout information is cached and so making changes to the property file will not show immediately. To help with testing, you can either restart the http task or more helpful is to load the xpage “resetcache.xsp” and then return to your xpage and refresh the browser.

### **Adding the layout to your XPages**

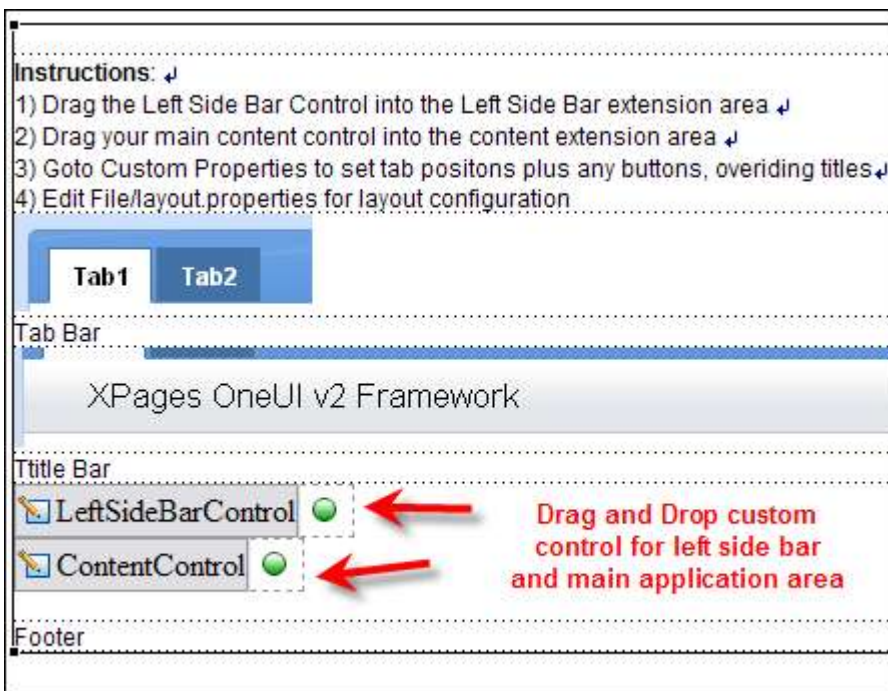
The powerful part of this template is the ease in applying the layout to your XPages/application. When you create your XPage, you simply drag and drop a custom control onto your XPage.

To do this, within designer and within your XPage, goto the custom control palette and locate the “OneUI templates” section. Then drag and drop either the 2 or 3 column layout onto your XPage.



This then automatically adds the layout to your page, and the idea is to drag and drop custom controls onto the “extension areas” of the layout custom control (left side bar, right side bar, main application pane).

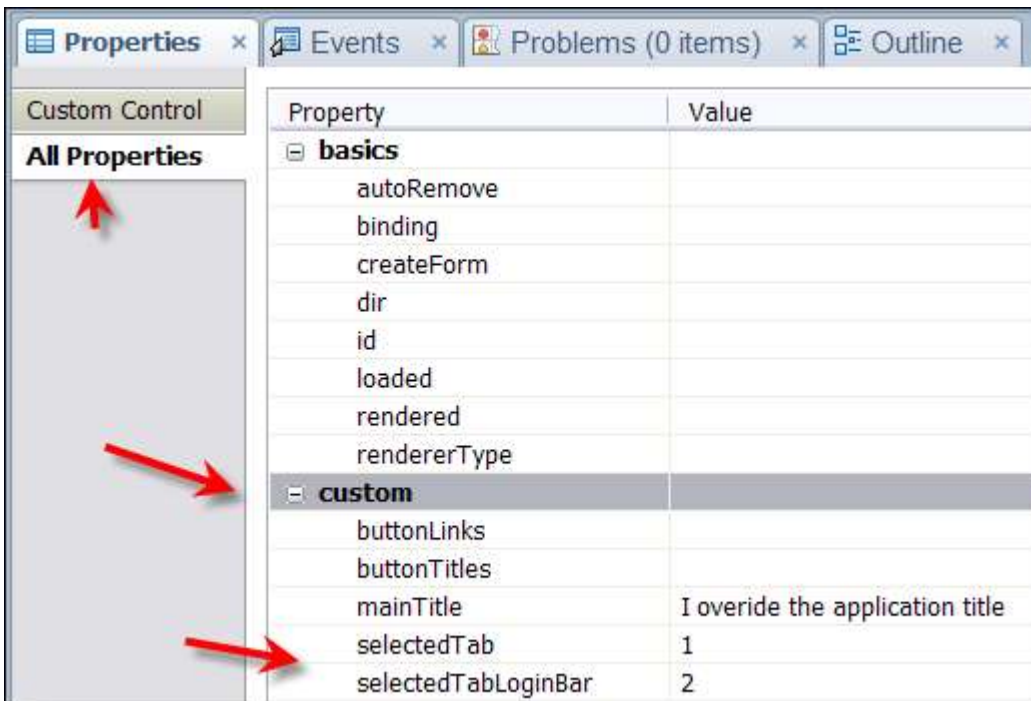
Out of the box controls are available for left side bar so typically you would use that, there is also an example right side bar and a place holder for the main application area.



### Tab and menu highlighting

One of the out of the box features of the template is tab and menu item auto highlighting. This is done via custom properties of the custom controls, these custom control's being the 2 or 3 column layouts or the left side bar.

So for each XPage we create we need to decide where in our “layout” it exists. So if we want it to be from one of the tabs we click on the layout custom control and set which tab number. This will ensure when that tab is clicked and loaded it is highlighted.



In the image above we can see the custom properties for the layout control and for example purposes the main tab bar has tab “1” indicated and the smaller tabs on the login bar has the tab “2” indicated”.

You will note that you can also override the title bar from the default of the application title using custom property “mainTitle”. You can also add custom buttons just for this XPage by adding title and link information in buttonTitles and buttonLinks respectively.

## Search

The search component, which shows when a full text index is present, uses a url parameter to pass the search request to your application. So in your application you can pick up this search request by using `context.getUrlParameter(“searchValue”)` within the search property of your view data source.

## Link Box

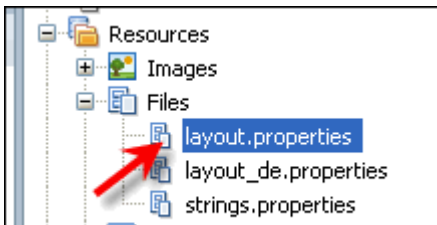
There is a example link box custom control included in the template and is embedded in the right side bar control. To add links simple use the custom properties:

custom	
linkTitles	+
value [0]	IBM
value [1]	Lotus
linkUrls	
value [0]	http://www.ibm.com
value [1]	http://www.lotus.com
Title	Bookmarks

## Different Languages

With the layout/strings being in property files, it is easy to translate and create versions for other languages in your organisation.

For example if you want to create a German version, copy your existing layout file, translate it and name it "layout\_de.properties". Then anytime a user with German as their language choice goes to the application it will automatically use this file instead.



## API

The layout can also be amended "on the fly" or created by some logic by using the api. If you open script library "xpConfig" you will see a initBase() function that sets the environment. You will also see instructions on how to add layout objects from code.

```

*****
Layout is setup in layout.properties (in Resources/Files)
Can also be setup programmatically (do so in this function for max caching):

Top Tab:                newTopTab("Link", "Title")
Main Tab:                newTab("Link", "Title")
Side Bar Menu Item:     newSideMenu("Link", "Title")
Footer Columns:         var col=new newFooterColumn("Column Title", "StyleClass")
Footer Column Items:   col.addLink("Link", "Title")
Buttons:                newGlobalButton("Link", "Title")
*****
**/

```

## OneUI v 2.1 and other themes

By default, the template uses the same css that XPages does so any controls can easily be used within it without needing to do any further work.

You can also select other themes which inherit from the OneUI v2.1 files that Xpages will (may)

use in the future, however they are not fully tested yet and some areas need some completion (from a template point of view – not the css).

As well as the base theme (blue) there are also metal, green, gold and red themes available and are easily selected by going to the application properties > XPages > theme defaults.



### Future setup by Wizard/example layout creator

In the future you will be able to edit the property file via an on screen/browser wizard. To demonstrate how this can work, I have provided some starting code inside an xpage and custom control included called demo.xsp and ccDemo respectively.

In order for these to work, you need to set the “maximum internet access” to designer whilst you make the amendments and be logged in as a user who has at least designer rights (so the design can be written to).

This also works in the client by setting the launch properties to launch the demo.xsp xpage. Clicking on the simple or advanced layout buttons will instantly update the property files and refresh the screen.

Administration server

None  
 Server

Action: Do not modify Names fields

This database's Access Control List will not be updated by the Administration Process.

Enforce a consistent Access Control List across all replicas

Enabling 'Enforce a consistent Access Control List across all replicas' will ensure that an ACL remains identical on all Notes database replicas.

Maximum Internet name and password: Designer

Look Up User Types for 'Unspecified' Users

Pressing this button will perform a Domino Directory lookup for each user in the Access Control List who is listed as an 'Unspecified' user type. If the name is found, the appropriate user type (e.g. Server, Person, etc.) will be set in the ACL.

Last change: Steve Castledine on 26/10/2009 11:02:16  
According to: IBM

OK Cancel

Home

### Demo Page for Layout Wizard

Apply Simple Layout

Apply Advanced Layout

Reset Cache

Top Tab 1

Top Tab 2

Top Tab 3

Top Tab 4

Main Tab 1

Main Tab 2

## Demo Page for Layout Wizard

Side Bar Menu 1

Side Bar Menu 2

Side Bar Menu 3

Apply Simple Layout

Apply Advanced Layout

Reset Cache

Footer Column 1

Link 1

Reset Cache

Footer Column 2

Link 1

Link 2